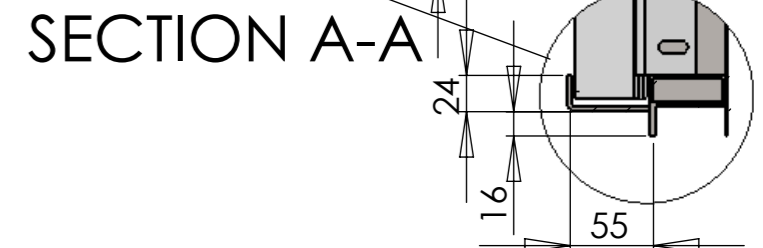
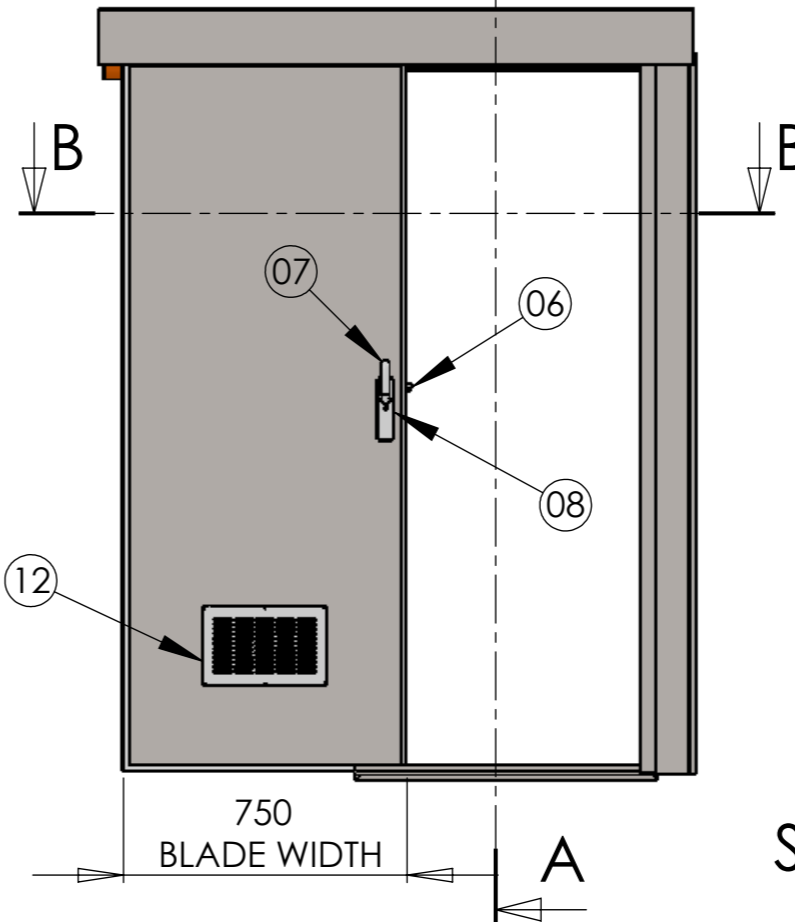
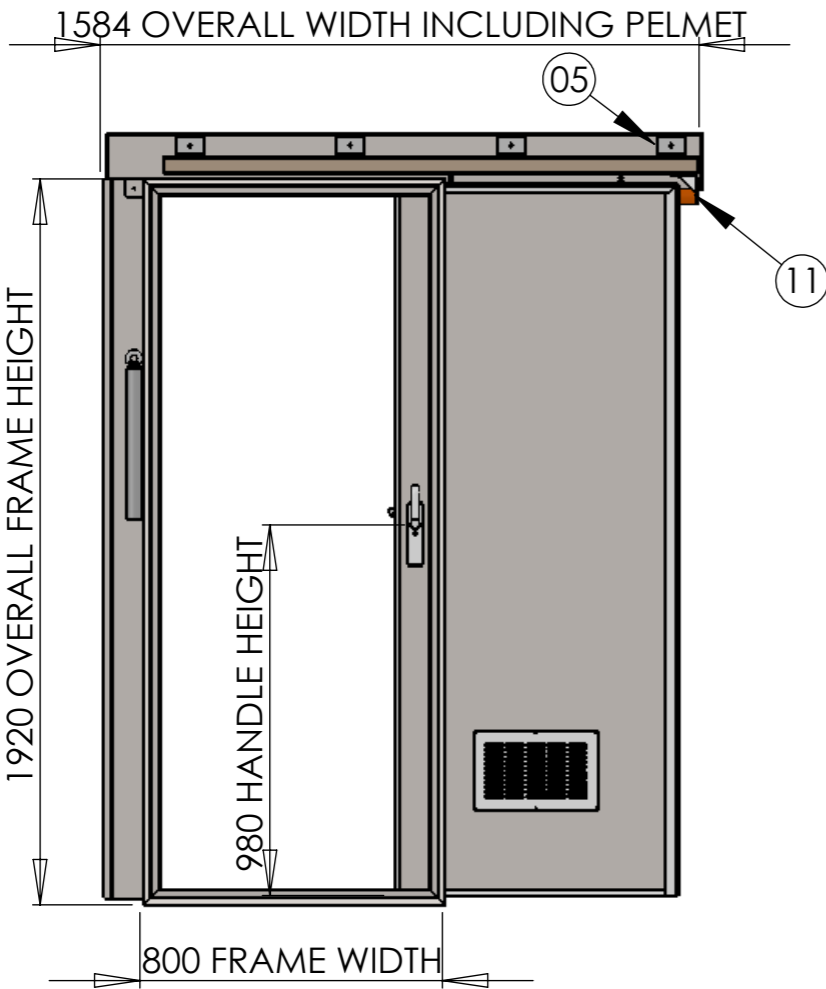
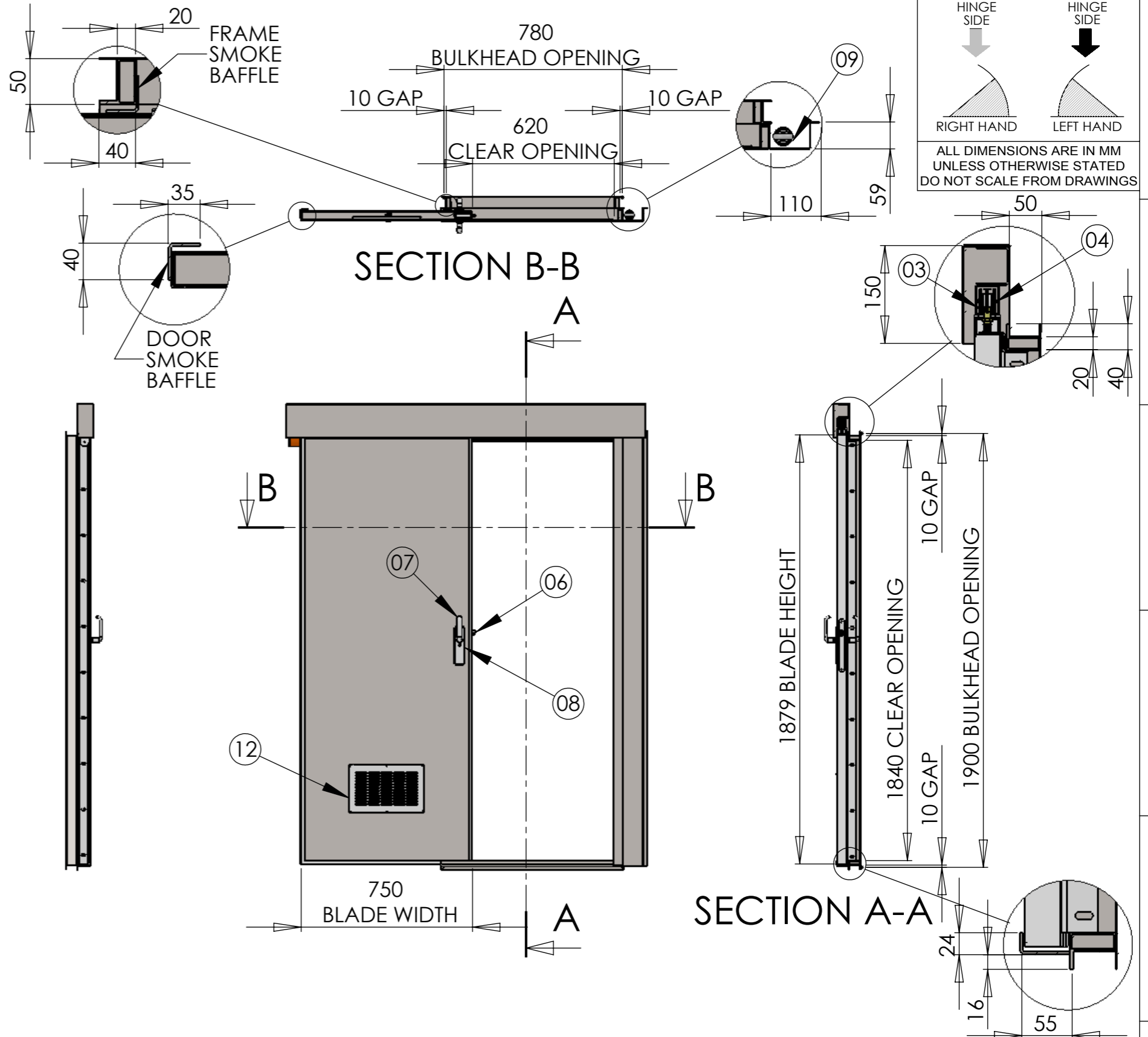


B15 TYPE SLIDING DOOR LEFT HAND OPENING

NOTES

1. DOOR SHOWN IS LEFT HAND OPENING IN OPEN POSITION
2. "10 GAP" DIMENSION IS GAP BETWEEN FRAME OUTER PROFILE AND STRUCTURAL OPENING
3. "BULKHEAD OPENING" DIMENSIONS DENOTE REQUIRED STRUCTURAL OPENING
4. DOOR BLADE INSULATED WITH ROCKWOOL RW7
5. DOOR FITTED WITH SCHWEPPER 3201 SLIDING DOOR LOCK, HANDLES AND BACKPLATES
6. COUNTERWEIGHT SUPPLIED TO AID CLOSING
7. DOOR HOLDBACK HOOK SUPPLIED LOOSE
8. ORDER COMPRISES 2-OFF LEFT HAND DOORS



ITEM	DESCRIPTION
01	DOOR BLADE ASSEMBLY
02	DOOR FRAME ASSEMBLY
03	HILLALDAM COBURN 2-16 TRACK
04	H. COBURN 2-207 WHEEL HANGER
05	TRACK BRACKET
06	SCHWEPPER 3201 SLIDING DOOR LOCK
07	HANDLE ST-ST
08	BACKPLATES ST-ST
09	COUNTERWEIGHT
10	MML DOOR GUIDE CHANNEL
11	MML DOOR STOP
12	SKEISVOL VENT 150cm ²

FILE LOC: M:\FACTORY\WORKSHEETS 2015\SEIMI\J2015209	MML Marine LTD
CUSTOMER: SEIMI	60 Waverley, Coatbridge, ML5 2BE, Scotland, UK
JOB NO: J2015209	Reception Tel: +44 141 814 6550
BLADE DIM'N: 750 X 1879	Email: sales@m-m-l.com
C/OPENING DIM'N: 620 X 1840	http://www.mmlmarine.com
ENGR: M.REILLY	DATE: 29/01/16
CHK BY: G.REID	DATE: 29/01/16
APP BY: G.REID	DATE: 29/01/16
MATERIAL: ZINTEC / MILD STEEL	PROJECT: PORTEB15
FINISH: TBA	TITLE: B15 TYPE SLIDING DOOR
SIZE: A3	SCALE: 1:20
SHEET 1 OF 2	PART NO. 540-2058-01
Rev. A	