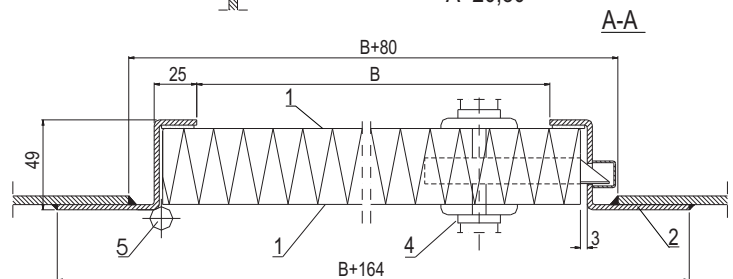
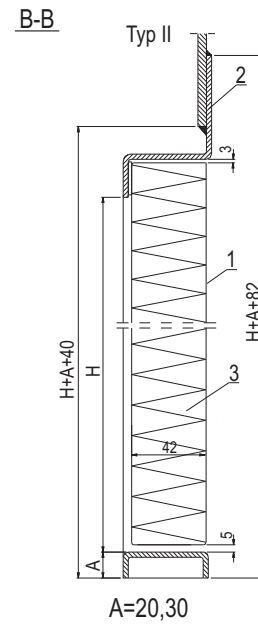
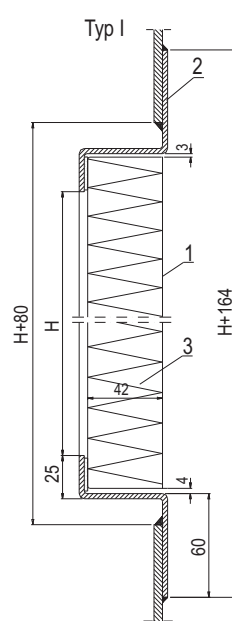
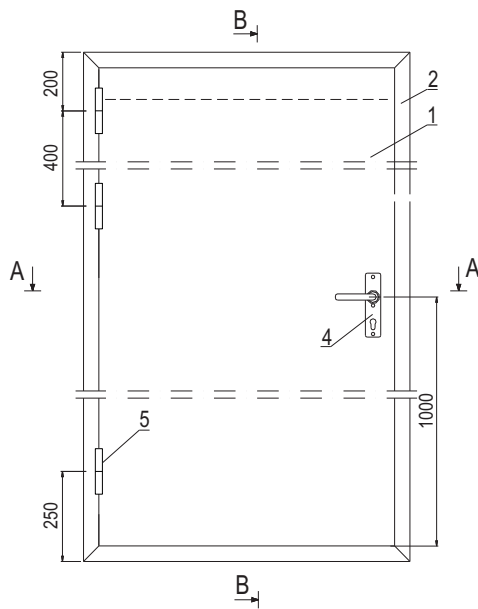
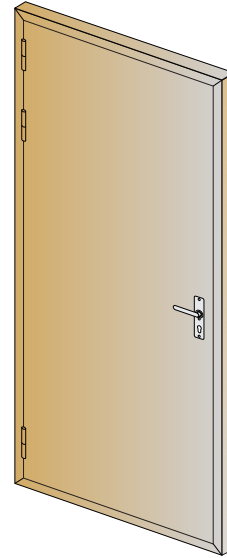




**KK18-06**  
**B-18-005**

*DOOR CLASS A15*

H	B	Masa (kg)
mm		kg/m <sup>2</sup>
1800	700	38,0
	800	
	1000	
1900	700	
	800	
	1000	
2000	700	
	800	
	1000	
2150	700	
	800	
	1000	





**KK18-06**  
**B-18-005**

*DOOR CLASS A15*

**Execution, materials, equipment:**

Door frame is made out of welded profiles bent from steel sheet 3 mm thick.

Door leaf is made from 2 rivetted cassettes of galvanized steel sheet 0,7 mm thick; coated with PVC foil or laquered acc. to RAL system, insulated mineral wool of density - 150 kg/m<sup>3</sup>; and reinforced with shapes made of steel sheet.

Doors are furnished with a cylinder lock, removable hinges.

Upper part of the door leaf has reinforcing units made of steel sheet, which enables assembly of closer and electromagnetic holder.

**Size:** HxB - clear opening;

**Type:** I-II;

**Variants:** L - left door;

P - right door.

**Finishing:** acc. to KK18-96/B-000-002

frame: powder painted acc. to RAL

leaf: F - PVC foil;

M - RAL coating

\*) colour - to be specified by a buyer, giving first a colour from the side of hinges.

**Example of designation in an order:**

Door A15; size: HxB=1800x800; type - II; variant - L(left), leaf - from the side of hinges foil PVC B14Y - oak, second - side - PVC foil - F25A, frame: painted Ral 8011.

**DOOR A15 II/1800x800-B14Y/F25A-RAL 8011 KK18-06/B-18-005**

**Scope of delivery:** Delivery includes door with the necessary equipment, without closer, electromagnetic holders.

**Destination:** Door A15 class are intended for installation in bulkheads A15 class on ships.

**SEIMI**

75, rue Amiral Troude, CS-41809, 29218 BREST CEDEX 2.  
Tél: +33 (0)2 98 46 11 02 Fax: +33 (0)2 98 43 37 49  
[info@seimi.com](mailto:info@seimi.com) [www.seimi.com](http://www.seimi.com)