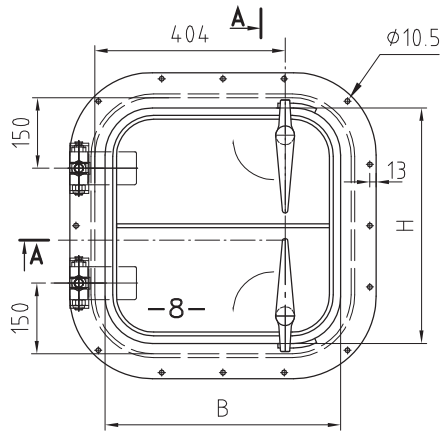
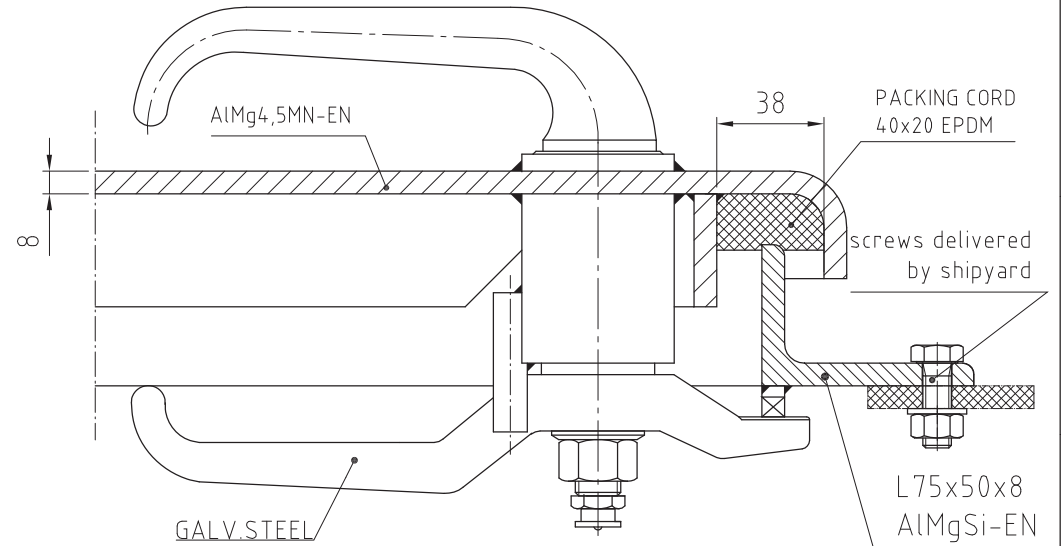
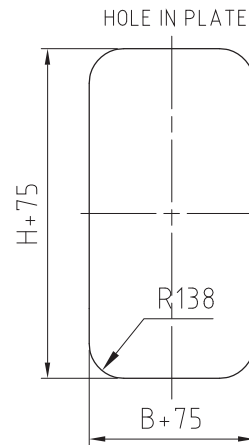
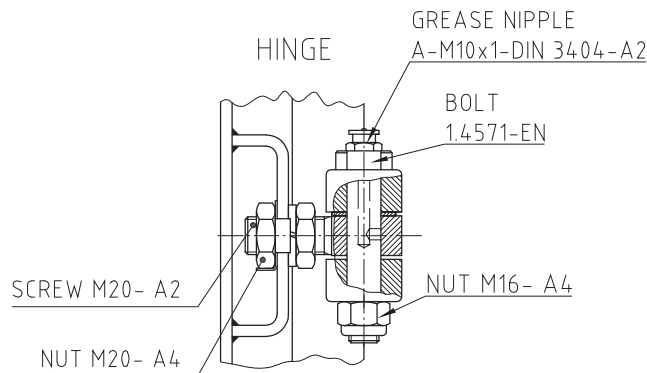
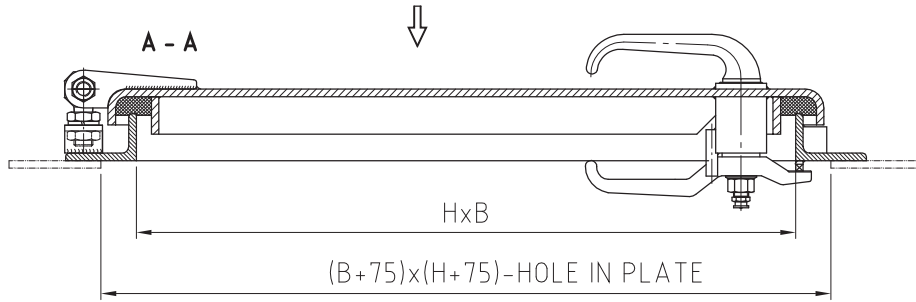


MODEL 2II  
INSIDE VIEW  
RIGHT DOOR



MAX. WATER PRESSURE TO 0.2 BAR



DEGREE OF PROTECTION:

WT-watertight

CLOSING MECHANISM:

PO-single closing

MODEL:

2II - 2 closures (see drawing)

LEAF MATERIAL:

5083-aluminum

STIFFENING:

l - flat bar

TYPE FRAME:

6060K-aluminum L75x50x8- screwed

SHAPE FRAME:

R100-radius 100

KIND:

L - LEFT DOOR -MIRROR REFLECTION

P - RIGHT DOOR -SEE DRAWING

PAINTING M39:


SIGMA EP 7417 -50µm

ALL ST. STEEL AND GALV. STEEL ELEMENTS

NOT PAINTED.

POS.	HxB	KIND	DISCRIMINANT
1	500x500	P(L)	P(L)-WT-PO-2II-5083-l-6060Kp-R100-500x500x8-M39

DEVIATION AMOUNTS OF FREE DIMENSIONS (INTOLERATED) ACC. TO ISO-DIN 2768 -CLASS "C"

NAME	SIGNATURE	DATE	ARTICLE  <b>SHIP DOOR</b>
DESIGNER	Ł.Czwojdrak	2015-10-01	
DREW BY	Ł.Czwojdrak	2015-10-01	
CHECKING	Z. Szuta	2015-10-01	
NORMALIZER	J.Pawłowski	2015-10-01	
APPROVED	M.Sommerfeld	2015-10-01	
SCALL			MASS (kg) ARCHIVAL NO DGR NO SHEET 1 SHEETS 1

PZ/15/07/0032 Y:\N19\_34\OFERTY\11206\11206.dwg